

SIX PARISHES NEWSLETTER

for

St Giles' Church. Badger

St Milburga's Church. Beckbury

St Andrew's Church. Ryton

Rector: Revd. Keith Hodson tel 01952 750774

Email: keithhodson@talk21.com

Web Site: <http://www.beckburygroupministry.org.uk>



Rota of Services for the 6 Parishes – March 2019

	Badger	Beckbury	Ryton	Kemberton	Stockton	Sutton Maddock
March 3 rd		9.30am Matins KH				11am Communion KH new
March 10 th	9.30am Matins TD		9.30am Communion KH new	11am Communion KH new		
March 17 th		9.30am Communion KH new				11am Matins KH
March 24 th	9.30am Communion KH trad			11am Morning Worship KH		
March 31 st Mothering Sunday		10am Family Service LT	9.30am Morning Worship KH			11am Communion KH trad

KH – Revd Keith Hodson

TD – Tina Dalton

LT – Local Team

PRAYER OF THE MONTH (a Lent prayer from the church services)

Holy God, rescue us from the chaos of sin
and through the death of your Son
bring us healing and make us whole
in Jesus Christ our Saviour.

Amen

Contributions for next month's newsletter to either –

David Tooth at Havenside, Beckbury-01952 750324. Email – davidtooth.salop@gmail.com

Or Ruth Ferguson at Tarltons, Beckbury – 01952 750267 not later than 14th of this month, please.



FROM THE RECTORY

A load of excuses.....

Dear friends

Some of you will remember Reginald Perrin of Sunshine Deserts? For those who have forgotten BBC's comedy series *The Rise and Fall of Reginald Perrin* in the late 1970s, Reggie always had one or more excuses for being late to work because of the train, rail track, or signalling faults. Indeed the excuses became more fantastic as the episodes continued

"Eleven minutes late, badger ate a junction box at New Malden"

There are some equally amazing excuses by some drivers explaining to their insurance companies the cause of their accidents in their insurance claims

A pedestrian I did not see, hit me, then went sliding under my car.

I had been learning to drive with power steering. I turned the wheel to what I thought was enough and found myself in a different direction going in the opposite direction.

The accident occurred when I was attempting to bring my car out of a skid by steering into the other vehicle.

The accident happened when the right front door of a car came round the corner without giving any signal.

How many marks out of ten for these drivers for imagination and creativity?

The season of Lent begins on Ash Wednesday 6th March, when we are encouraged to review our attitudes and life styles with honesty and clarity, without any pretence or excuse. I don't think God gives marks for creative excuses.

The old 1662 Prayer Book introduction and confession put things clearly

Scripture moveth us to acknowledge and confess.. our sins... and that we should not dissemble nor cloak them before the face of Almighty God.....

We have followed too much the devices and desires of our own hearts.

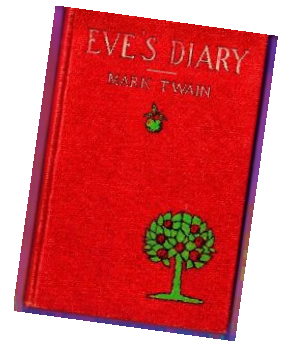
We may not like the language, but the message is obvious, especially for this season of Lent. Let's use its disciplines to change and develop good habits, and drop the excuses we make to others and to ourselves.

With best wishes for Lent

Keith Hodson

DIARY DATES FOR MARCH 2019

Wednesday 6 th	10am	Ash Wednesday Communion Service at Beckbury Church
Wednesday 6 th	7.30pm	Beckbury Parish Council meet In Beckbury Village Hall
Tuesday 12 th	1.30pm	Six Parishes Friendship Club visit to Mere Park, Newport, meeting by the Church
Wednesday 13 th	7.30pm	Ryton & Grindle Parish Council meet In Ryton Church
Wednesday 20 th	10am	Prayers on Wednesday
Thursday 21 st to Sunday 24 th		Beckbury Community Shop Walking Festival
Sunday 31 st	10am	Mothering Sunday Service at Beckbury Church



CHURCH NEWS

Lent begins on **Ash Wednesday 6th March**, and we mark it with a 10am communion service at Beckbury Church.

There will be **Lent Groups** meetings at Kemberton, meeting on Tuesday evenings. Full details from local church members.

Lent Lunches for Christian Aid begin at Shifnal Methodist Church on March 1st at 12 noon and continue on the following Wednesdays until the last one on April 10th. The Six Parishes are responsible for providing and serving lunch on 20th March. Volunteers, please contact Angela Chatham.

There will be a 10am family service at Beckbury for **Mothering Sunday on 31st March**. Remember the **clocks go forward** that weekend, so 10am BST will “feel like” 9am GMT (and those who forget to change their clocks will arrive at the end of the service!)

CONDOLENCES

We extend our sympathies to the family of the late Richard Cattell of Badger, aged 62, whose service was held at Telford Crematorium on 11th February 2019.

We extend our sympathies to the family of the late Inez Coverdale of Badger, aged 71, whose service was held at Shrewsbury Crematorium on 11th February 2019.

SIX PARISHES FRIENDSHIP CLUB

Our February meeting started with a game of Bingo, however with regular caller John Whitham on holiday the caller's duty fell to David who proceeded to fumble his way through dropped balls, putting numbers in the wrong recording places as well as on the floor, and generally not being as good as John at what looks a simple job on the surface.

After a tea break with Jean Preece providing home-made cakes to celebrate hers and Alan Lewis's birthdays (and yes David certainly needed one) we held our own BRING & BUY where members brought in surplus Christmas gifts which were on sale at a nominal £1.00 per item. This surprisingly raised £51.00 for club funds. We then rounded off the afternoon with one last game of Bingo, this time with each member playing with 5 tickets.

Our next meeting is on Tuesday 12th March when we are again visiting Mere Park Garden Centre, near Newport, for a pre-season walk round to see what is new this year. We meet outside Beckbury Church at 1.30pm to arrive at Newport by 2pm.

BECKBURY PARISH COUNCIL

Meeting held 13th February 2019

Councillor Gibbins reported that the shop had been busy in the run up to Christmas but trade had dropped off during January and then had started to pick up a little into February.

During March the shop celebrates its first birthday and to mark this a weekend local walking festival is being planned – all are invited.

The new Parish Plan Committee, chaired by James Paice, has held its first meeting and is preparing a new village questionnaire to be distributed shortly to recruit everyone's ideas and comments.

Shropshire Council have been asked to re-do the white lines at the junctions around the village and have promised to incorporate this into this year's plan.

Two planning applications were reviewed by the Council:-

1. Erection of a single storey side extension at 7 Madeley Road. No objections raised but the Council made note of a large shed which had appeared in the front garden without planning permission.
2. Beckbury School – applying for an extension to the use of the portable buildings – no objections.

COMMUNITY CARS

Did you know that you can have access to subsidised transport

To request access to this you must first:

1. Pay your Council Tax to Shropshire County Council
2. Have an appointment to attend any medical appointments
3. Hospital Visiting (close friend or relatives)

If you are unsure if you will be entitled please contact the co-ordinator Albrighton Community Cars; Mrs Sue Mace – 01902 441319

NEWS FROM RYTON & GRINDLE PARISH COUNCIL

There was a Parish Council meeting held at St. Andrew's Church on Wednesday 12th December 2018.

Meeting News. The Budget for 2019/20 was presented by the Clerk and approved as well as the new Precept, there were several Planning matters to discuss, tree work at Cherry Tree Farm, Ryton, tree work at Wulfrun Lea where emergency tree work had already been granted. Also, Valley Farm. There was a Grindle House Farm Update, Cllr Dady confirmed that following no further progress other than a slight reduction in the number of HGVs driving through the villages nothing seemed to be happening and so a letter has been sent to Shropshire Council Planning and Cllr Michael Wood copied in expressing the Parish Council's dismay at the situation and requesting an official update. Other items discussed included the Parish Plan (Outline of what's important to the Parish) which will be refreshed throughout 2019. The Parish Council would like to involve the community in this refresh and further information will be circulated on how to play your part.

Good News! New noticeboards will be installed in Ryton and Grindle before the end of March 2019, we are all looking forward to seeing those.

Note for the Diary. The next Parish Council meeting is on the 13th March 2019 at 7.30pm in St Andrews's Church. Councillors would love to see you there, so please come along if you can. Agendas will be posted on the website and noticeboards nearer the time.

To contact the Parish Council clerk.rgpc@gmail.com

Website address www.rytonandgrindle.org.uk

BECKBURY COMMUNITY SHOP

FIRST ANNIVERSARY CELEBRATIONS 21st – 24th MARCH

In addition to festivities at the village hall and shop to celebrate its first anniversary, we are going to hold a **BECKBURY WALKING FESTIVAL ON 21st – 24th March.**

There will be a variety of walks to suit all abilities spread over 4 days. Details of walks will be published in Beckbury Shop once they have been finalised.

The provisional plan for the schedule of events is:

Thursday: Short walks and longer walks around Beckbury and the adjoining parishes. Nordic Walking taster session.

Friday: Another selection of local short walks and some longer walks.

Saturday: Community History Walk, Canicross taster session.

Sunday: Family walk, an introduction to Geocaching...don't forget to grab some cake from the shop!

Inez Coverdale

One of the many wonderful things about having a community shop in the village is that it has brought so many people together, people who never knew each other have become friends through volunteering in or using the shop. So it was with great sadness that we heard that our volunteer Inez Coverdale from Badger, who had volunteered at the shop since it opened, had very sadly died on 27th January

Inez loved the shop and said that working there had 'made a new woman of her' when she was interviewed on Radio Shropshire last year. Many of you will have got to know her as we did. She was a caring person who wanted to support the local community, indeed she had been planning a fund raiser for the village hall to take place in the Spring.

We send our condolences to her partner Alan and daughter Sharon and the rest of her family. We will miss Inez and always remember.

Try something completely different.....BELLRINGING

If you like company, teamwork, gentle or strenuous exercise, (your choice) and mental challenge and looking to develop a new skill or hobby, The Beckbury Bell Ringers could be for you.

Who can ring Church Bells?

“IF YOU CAN RIDE A BICYCLE YOU CAN RING!”

Ringling is well within the capabilities of most people. You don't need to be big, strong, musical or mathematical – and you don't need to be a church-goer/parishioner. Women, men, girls, boys, young and old can all participate in and enjoy bell ringing.

The initial learning takes a few weeks, after which you can begin to ring with the rest of the band.

Beckbury Bell Ringers meet to practice once a week on Tuesday evenings 7.45pm. Bell Ringing also takes place before the Sunday services and occasionally by arrangement for Weddings and Funeral services.

For more information contact Andrew on 07973 398 289; andrew61wg@gmail.com or www.cccbr.org.uk

BECKBURY ALLOTMENTS ASSOCIATION

The good news is that British summertime is nearly upon us and we can put February weather behind us. The clocks go forward on 31st March which means lighter nights and with a bit of luck some much needed sunshine.

Jobs to be getting on with:

- Last chance to prune fruit bushes and trees whilst they are still dormant. Not soft fruit though, their time is in the hot summer weather.
- Garlic grows best when exposed to a period of cold weather, so last chance to plant up a few bulbs.
- Plant out onion sets/shallots before they start to produce shoots. Reject any that have already started as they will only bolt during the summer.
- Sow celery, celeriac, French beans (they are hardy enough to be planted out before runners) and cauliflower.
- March is the right time to establish an asparagus bed. It's going to be there for many years so get the right position. Prepare the bed with plenty of drainage and keep weed-free. Lawn cuttings are a good mulch.
- Mid-March you can plant out your chitted potatoes. If you want some really early spuds you can start some in a black polythene sack in the polytunnel or greenhouse. Punch drainage holes and use multi-purpose compost.
- Jerusalem Artichokes tubers can be planted now. They are pretty invasive so make sure you dig them all up at harvest time. Any tubers left will grow again, making it a permanent bed.
- Tomatoes, peppers, aubergines and cucumbers can be started off on a windowsill or propagator.
- Parsnips need to come up now before they start to regrow.
- Cover beds with cloches or black plastic to warm up the soil.
- Sow early celery, peas, broad beans and spinach.
- Finally, my least favourite job.....weeding. Dig out problem weeds, especially perennials and hoe regularly to prevent annual weeds.

Roll on the sunshine. Our seed packets are desperate to be opened!

There are some allotments available, if anyone is interested in taking on a half or full plot please contact our chairwoman Gina Summerville 07795625316.

Heidi Pringle-Scot

APARTMENTS TO LEASE

Preston Trust Homes has a rare vacancy for a retired person, or couple seeking an apartment. The apartment is in a modern building and provides a quiet, safe and comfortable environment. There are 14 apartments which are in a two-storey building, built in 2003, located in Newport, Shropshire.

Apartments are unfurnished and comprise of an entrance hall, lounge, bedroom, kitchen with cooker, and bathroom with walk-in shower. Other facilities include a door entry system, lifeline, fire detection equipment, telephone, television points and car parking space.

The complex is for independent living and includes a communal lounge, kitchen, laundry, landscaped gardens and visitors' parking, and is managed by a part-time Manager.

Criteria: Applicants must be over 60 years of age, capable of independent living and have links with Shropshire.

Contact: Enquiries and applications can be made to the Manager, John Roberts
On 01952 282050. Mobile: 07903 652416
Email: pthmanager@btinternet.com

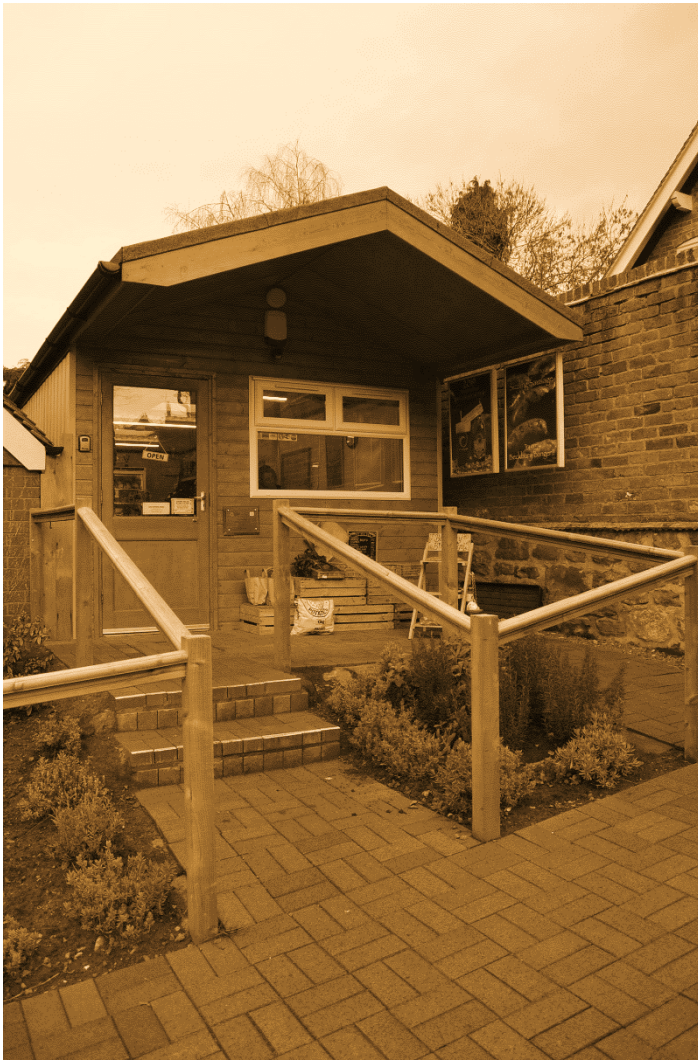
HOW TO STAY PROTECTED FROM SCAM CALLS

It's probably a scam if someone calls you out of the blue to:

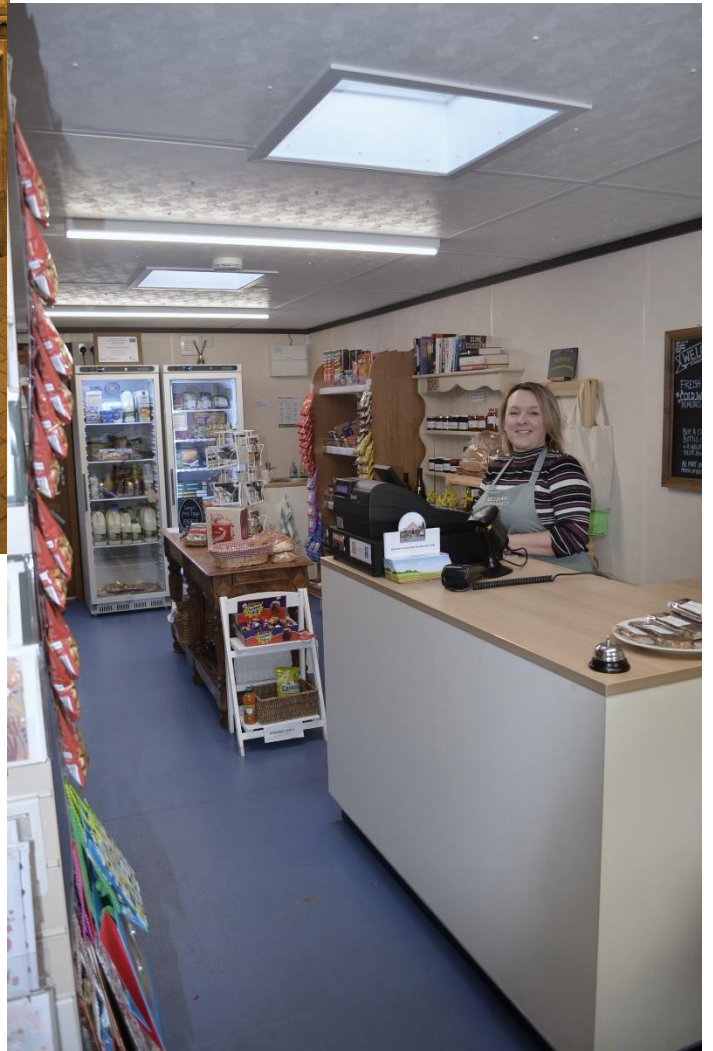
- Tell you that your service has been hacked
- Try to remotely take control of your computer or another device
- Tell you they've found a problem with your computer
- Ask you for an urgent payment and threaten to disconnect your service
- Ask for payment details to activate Call Protect, Caller Display, or any of our free services
- If a recorded message is received stating that your BT line and internet connection is going to be terminated later that day, for further information press button 1 on your telephone. **DO NOT TAKE ACTION AT ALL, BUT PUT YOUR PHONE DOWN IMMEDIATELY. This is a scam.**

Residents are warned of what is a security company scam operating in this area when a caller purports to be from a Security Company and who possibly states that they are endorsed by a local police force and then tries to make an appointment to check on the householder's property – this a scam – no police forces endorse any companies, including so called security companies.

Please do not provide any details or agree to appointments – end the phone call and notify your local police.



For all your everyday needs – milk, tea, coffee, bread, jam, spreads, wine, beer, soft drinks, newspapers, hot drinks and much more – come in and have a look round.



**THIS MONTH'S NEWSLETTER IS KINDLY SPONSORED BY
BECKBURY COMMUNITY SHOP TO CELEBRATE THEIR FIRST YEAR**